

Give Below are the Results of Findings of Research carried out using the Bio Pulsar Reflexograph(R).

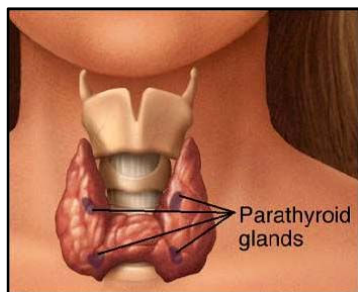
For Details- http://www.angelgabrielwellnesscenter.com/index_files/AuraReading.htm
In many case studies, the Pituitary (The Third Eye or Anjana) and the Pineal Gland (The Crown Chakra), Energy level readings were very high and were found to be common in many patients.

Concurrently, the Throat Chakra displayed a lack of or deficient Energy and this in turn had an effect on the Root Chakra and the Sacral Chakra (the Creative Chakra).
The Throat Chakra is connected with the Thyroid and Para Thyroid glands.

This article will focus primarily on the ParaThyroid and show how an imbalance has an effect on our body.

What is the ParaThyroid Gland?

ParaThyroid Glands are mustard yellow colour glands, a cluster of 4 to 8, located just behind the thyroid gland. Their functions are in no way connected to each other. The function of the Parathyroid is to balance Calcium and Phosphates in our body. They play a role in the absorption of calcium in the gastro-intestinal tract, activate Vitamin D and promotes proper calcium uptake by the kidneys. Our body needs to maintain proper levels of calcium and potassium for the working of the muscular, nervous and the lymphatic system.



If the Parathyroid functions results in elevated calcium levels, it results in kidney stones, gall stones, poor concentration, severe constipation, heart palpitation, loss of energy, dizziness and light headedness, high pulse rate (above 100). Elevated calcium ultimately leads to heart problems as years go by. Behavioural changes such as easy irritability and forgetfulness, feeling old and low in energy, thinning of hair, miscarriages in the 5th or 6th month of pregnancy or difficulty conceiving, formation of blood clots, acid reflux and inability to sleep/ restlessness, skin bruising are some of the other symptoms. Calcium deficiency can increase risk of bone disorders such as osteoporosis. Excess of sodium and caffeine reduces calcium levels in our body. We need to have a balanced level of calcium for proper functioning of the Parathyroid.

What is Vitamin D?

Its principal function is to maintain blood calcium in the normal range. It does that largely by telling the intestine to absorb more calcium from the food we eat. If you are not getting enough calcium from your diet, vitamin D removes calcium from your bones. The body will keep blood calcium normal at any expense because calcium is critically important to keep your mind, lungs, muscles, and heart functioning.

Ionic calcium plays a very important role in the rhythmic action of the heart and intestine and helps in blood clotting, maintenance of pH levels and Acid-Alkaline Levels.

A Daily Intake is required to maintain the required calcium levels in our body

AGE	INTAKE LEVEL
4-8 years	800mg
9-18 years	1300 mg
19-50 years	1000 mg
50 years and above	1500 mg
pregnant and lactating mothers	1000 mg

Normal Calcium in blood

Adults:9.0–10.5 milligrams per deciliter (mg/dL) or 2.25–2.75 millimoles per liter (mmol/L)

BLOOD CALCIUM LEVELS IN ARE HIGHER IN CHILDREN BECAUSE OF THEIR GROWING BODIES

Calcium in blood

Children:7.6–10.8 milligrams per deciliter (mg/dL) or 1.9–2.7 millimoles per liter (mmol/L)

Ionic calcium Level

Adults:4.65–5.28 mg/dL

Treatment Therapies Offered in Holistic Medicine - Stress plays a major role in imbalance of calcium levels in our body. The Parathyroid Point in Reflexology is located in the palm of our hand and is also the location of spleen muscle in Kinesiology TFH. The Area needs to be pressed firmly everyday to check for sensitivity and pain. The local application of a light blue light around the Throat Area results in balancing of the Parathyroid.

Application of a Tachyon Patch on the Parathyroid area of the Palm of our hand and another on the Throat Chakra also produces a balance of the Energy Field.

The cell reflection of Blue Light is Yellow and therefore this reinforces the ParaThyroid gland.

Lymphatic Drainage with EFT Techniques is also known to be beneficial.

An early morning walk in the sun with proper breathing techniques also helps in the formation of Vitamin D which in turn helps in assimilation of Calcium in our body. Calcium is akin to the cement foundation of our skeletal system and must always be taken care of.

Dryness of skin is a sure sign of Calcium imbalance in our body.

